

TecnoLine

Subtle design



With the TecnoLine partition system you opt for a sleek and almost featureless vertical delineation.



Sleek arrangement

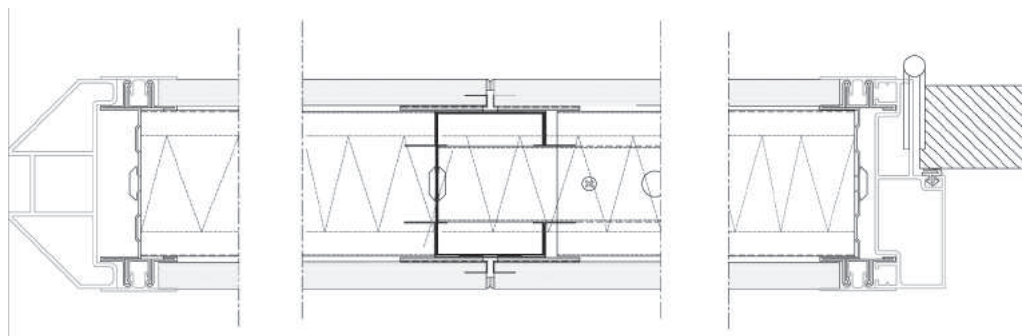
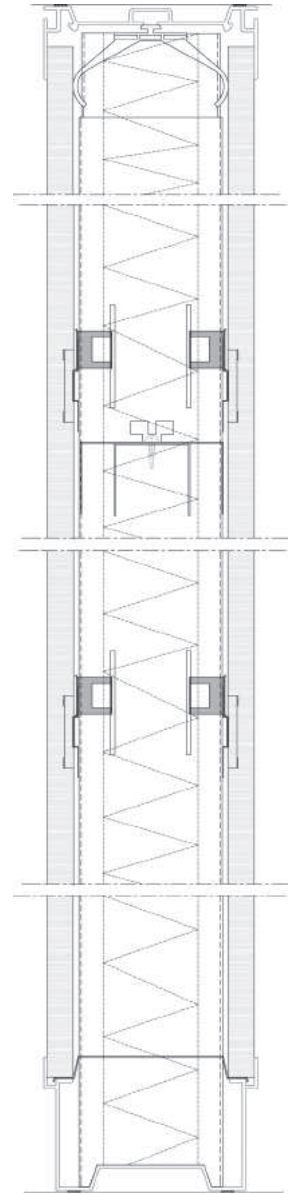
TecnoLine creates a modern environment with a wide scope of designs: wood textures, metallic looks, striped patterns, plain colours, etc.. Apart from being versatile the system also offers the choice between the product and budget-dependent characteristics of plasterboard and laminated chipboard panels.



Combined with SpaceTech and SypLux partition systems TecnoLine contributes to a complete solution for your project design. Profiles directly available from stock combined with very fast and clean assembly with minimum inconvenience also ensure that the activities in your organisation are unaffected or hardly disturbed.

Specifications

- + Wall thickness 98 mm
- + Wall height $\leq 3.500 \text{ m}^1$ (max.)
- + In modules $\leq 1.200 \text{ m}^1$ variable
- + Weight 1.5 kg/m²
indicated weight excludes fill-ins
- + Sound insulation $\leq 41 \text{ dB}$
- + Fire resistance -
- + Profiling aluminium according to EN755-9
aluminium ceiling profile with integrated picture rail
aluminium floor profile with recessed skirting, available in 3 designs
aluminium corner profiles in a squared or rounded design
aluminium door sections in a squared or rounded off design
- + Finish EV1 10 μ anodised according to Qualanod
powder coating according to Qualicoat
- + Panels 12.5 mm. plasterboard with vinyl wall covering, FineLine type
12 mm. laminated chipboard panel
- + Insulation 45 or 60 mm. mineral wool
- + Doors 40 mm. obtuse design
8 to 10 mm. toughened safety glass
- + Optional LED lighting, window film, sliding doors

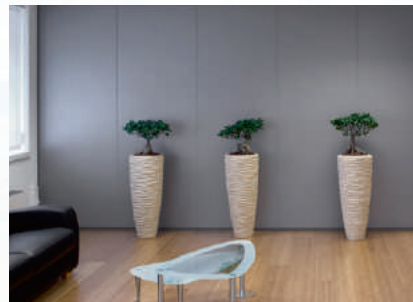


Description

Make : Sypla International bv
Type : TecnoLine

Non-supporting, demountable and movable double-sided partition system for application as a floor-to-ceiling system partition.

Partition system, thickness 98 mm., consisting of an electro-galvanised steel inner frame and an aluminium frame consisting of connection, corner, window and door profiles in a square and/or rounded design. The system is vertically accentuated seamlessly between the panels by a vee butt joint (zero joint).





Carlsonstraat 2 | 8263 CA Kampen | The Netherlands | P.O. Box 352 | 8260 AJ Kampen | The Netherlands
t +31 (0)38 386 10 90 | f +31 (0)38 332 23 89 | @ info@sypla.com | w www.sypla.com