

QuickWall



Sypla
INTERNATIONAL

QuickWall

Functional work environment

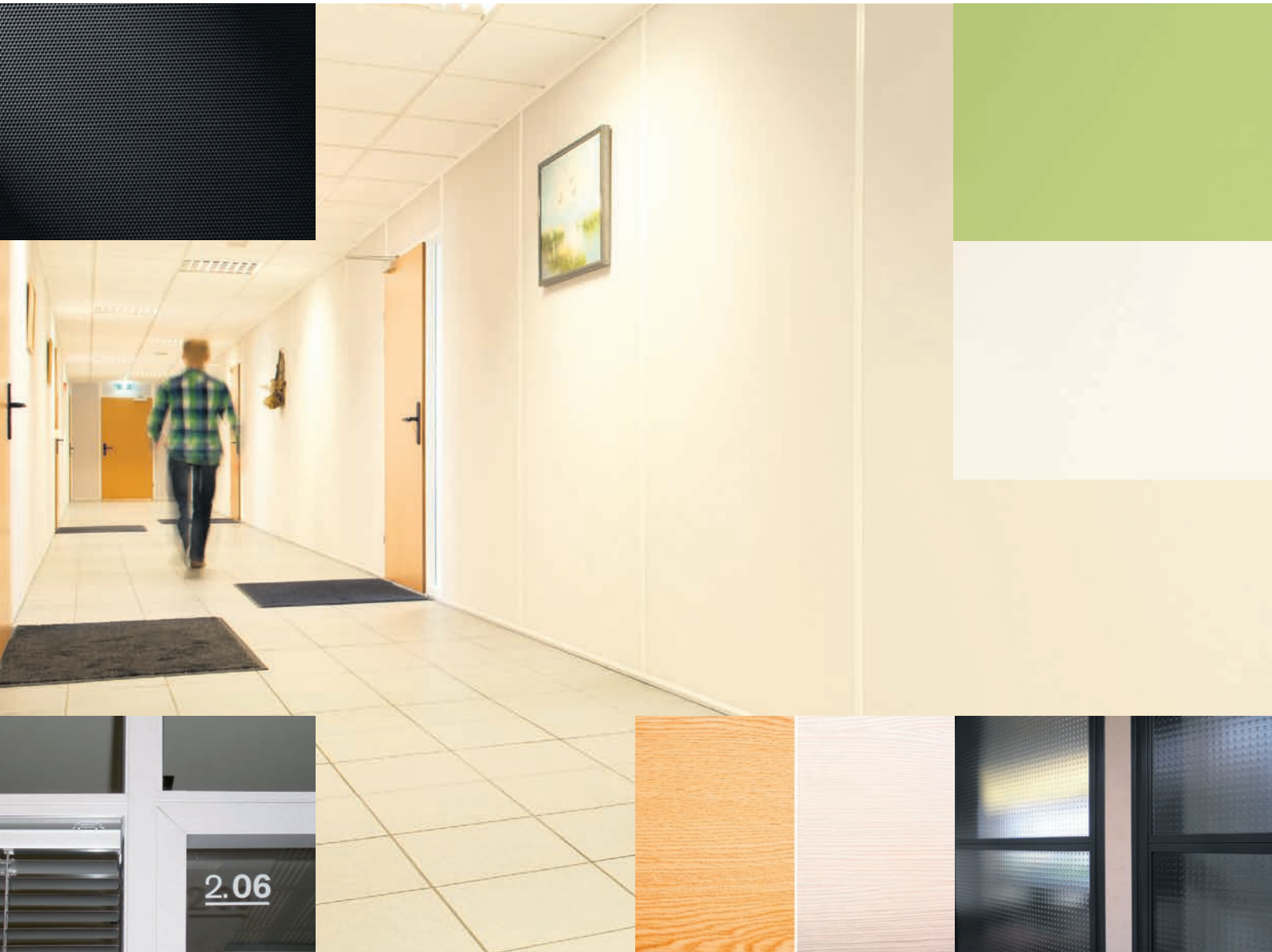


Due to their simplicity the QuickWall system partitions are a saving factor in the accommodation budget when the layout of a work area is involved.



versatile arrangement

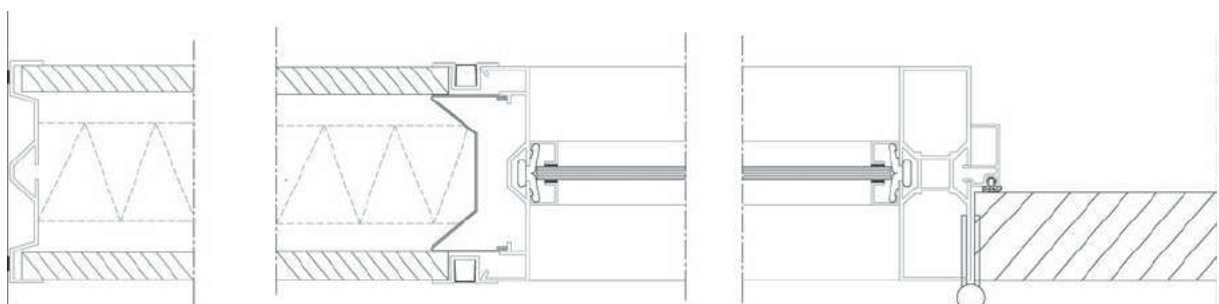
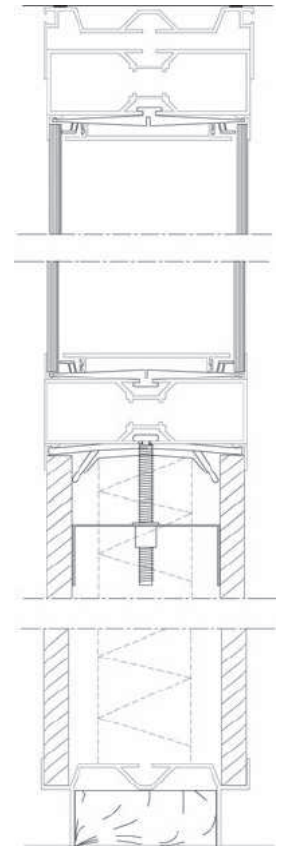
With a wide range of profiles the QuickWall partition system offers many possibilities. Due to the varied wall thicknesses this system has a high degree of design freedom and makes possible almost every required wall layout. The project layout can simply be adjusted by QuickWall to your requirements and wishes.



The profiles are directly available from stock. Quick assembly with a minimum of inconvenience also ensures that activities in your organisation are unaffected or hardly disturbed.

Specifications

+ Wall thickness	98 mm
+ Optional	64 mm
	37 mm suitable as single glass wall and wall connection to the external wall
+ Wall height	≤ 6.000 m ¹ (max.)
+ In modules	0.300 m ¹ ~ 1.200 m ¹ variable
+ Weight	2.2 kg/m ² indicated weight of closed elements excludes fill-ins
+ Sound insulation	-
+ Fire resistance	-
+ Profiling	aluminium according to EN755-9 aluminium ceiling profile with integrated picture rail aluminium floor profile with recessed skirting aluminium profiled coping with plastic insert strip aluminium corner profiles in a square and rounded design aluminium door profiles in a square design
+ Finish	EV1 10 μ anodised according to Qualanod powder coating according to Qualicoat
+ Glazing	single and 2-sided 4 to 7 mm.
+ Panels	12.5 mm plasterboard with vinyl wallcovering 12 mm laminated chipboard panel
+ Insulation	45 or 60 mm mineral wool
+ Doors	40 mm obtuse design 40 mm lipped design 8 to 10 mm toughened safety glass
+ Optional	LED lighting, desk tops, slats, window film, sliding doors, whiteboards, etc fire-resistant and impregnated plasterboard/cardboard panel coloured, matt, fire-resistant, sound-insulating or security glass



Description

Make : Sypla International bv
Type : QuickWall

Non-supporting, demountable and movable double-sided partition system for application as a floor-to-ceiling system partition.

Partition system, thickness 98 mm., consisting of a sendzimir galvanised steel inner frame and an aluminium grid consisting of connection, corner, window and door profiles in a square and rounded design. The system is vertically accentuated by omega profiles screwed onto the inner frame with plastic insert strips to attach the panels or glazing.





Carlsonstraat 2 | 8263 CA Kampen | The Netherlands | P.O. Box 352 | 8260 AJ Kampen | The Netherlands
t +31 (0)38 386 10 90 | f +31 (0)38 332 23 89 | @ info@sypla.com | w www.sypla.com